

HGH 150 / HGH 250

高效能CNC滾齒機 HIGH EFFICIENT HOBBING MACHINE

採共用底座與模組化結構設計，機身結構剛性強大；EGB同步控制技術配合無背隙減速機主軸，可高速且穩定產出高精度等級齒輪。

HGH 150/250—The high performance CNC gear hobbing machine has outstanding rigidity and adopts modular construction design. Equipped with EGB synchro-control technology and backlash-free gear reducer spindle, HGH 150/250 has high stability and productivity to produce precise gears.

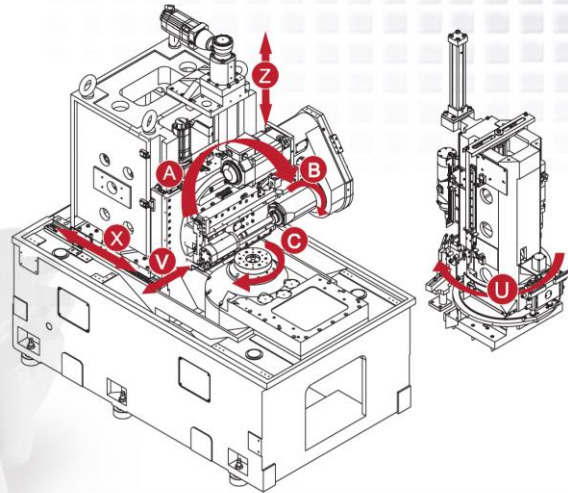


刀具之夾持與放鬆以油壓裝置操作方式快速完成，上部工件治具以ISO40介面及油壓裝置快速交換與夾持。
The changing of cutter and upper work arbor (ISO40 interface) is quickly done by hydraulic system.

油壓、潤滑及空壓裝置設計於機台正面，便於操作人員掌握機台狀態及機械維護人員作業。

The hydraulic, lubrication and air pressure system are located on the front side of the machine, and it is convenient for the operator and maintenance engineer to monitor and maintain the machine.

X	徑向進給	Radial infeed
Z	軸向進給	Axial infeed
B	刀具主軸	Hob spindle
C	工件主軸	Work table revolution
A	刀具頭迴轉軸	Hob head swivel
V	刀具移動軸	Hob shifting
U	工件交換軸	Work change



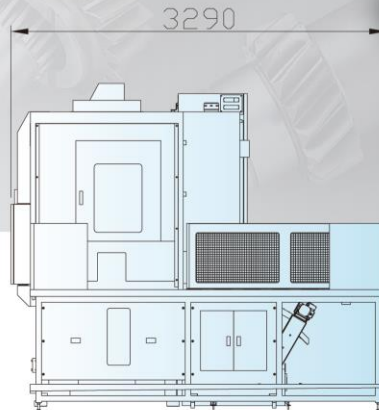
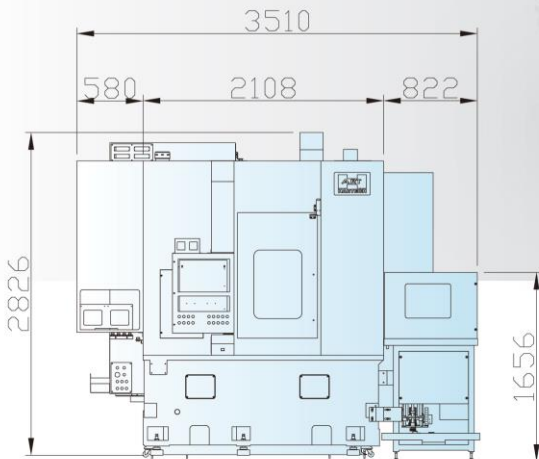
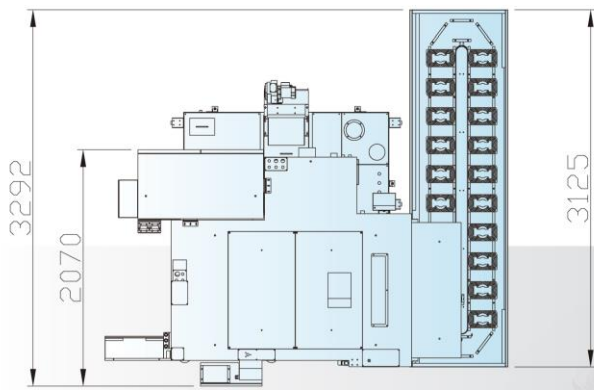
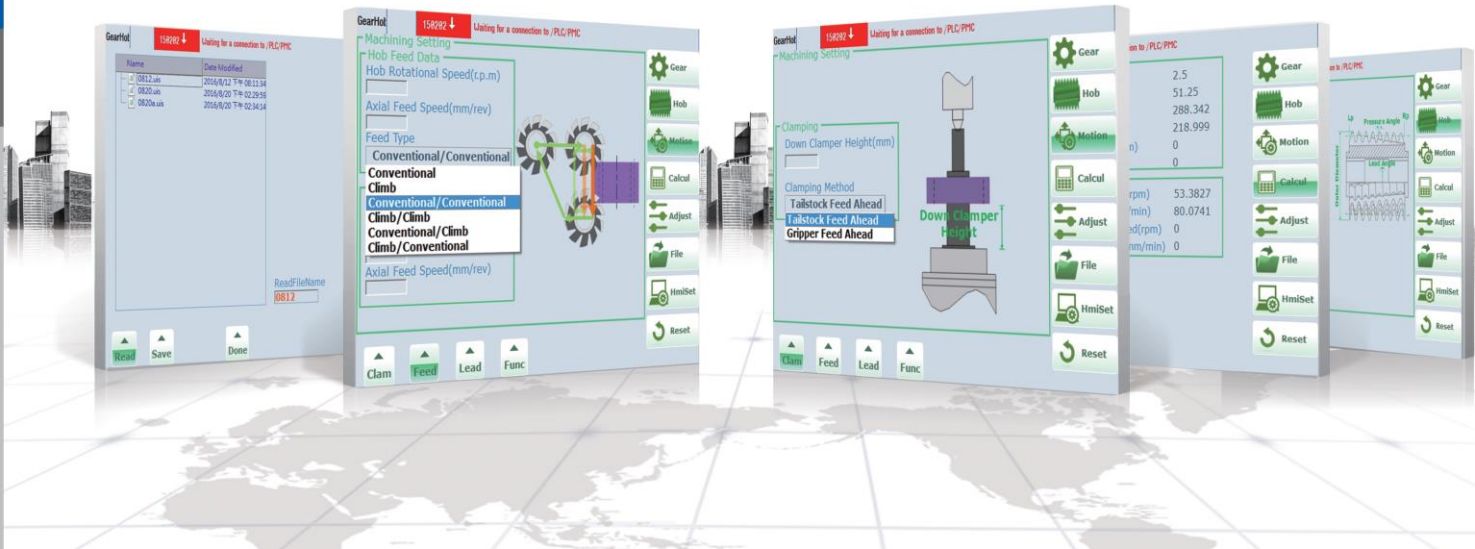
CNC齒輪滾齒機 技術規格：Specification

項目	Articles	敘述 Description	HGH 250 規格 Capacities	HGH 150 規格 Capacities	HGH 180 規格 Capacities
工件	Works	最大工件外徑 Max. O.D.	250 mm	150 mm	180 mm
		最大模數 Max. Module	6 mm	6 mm	3.5 mm
徑向進給X軸	Radial infeed X-axis	刀具軸至工件軸中心距離 Distance between hob and work	25~215 mm	25~190 mm	25~190 mm
軸向進給 Z軸	Axial infeed Z-axis	最大行程 Max. in feed		250 mm	
刀具頭迴轉 A軸	Hob head swivel A-axis	迴轉角度 Swivel angle		±45°	
刀具軸向進給 V軸	Hob shifting V-axis	最大行程 Max. infeed	180 mm	180 (140) mm	180 (140) mm
刀具主軸 B軸	Hob shifting B-axis	最大刀具長度 Max. hob length	220 mm	220 (160) mm	220 (160) mm
		最高轉速 Max. rpm		1500 rpm	4000 rpm
工件迴轉主軸 C軸	Work spindle C-axis	最大刀具外徑 Max. hob O.D.	130 mm	90 mm	90 mm
		最高轉速 Max. rpm		300 rpm	400 rpm
電力規格	Power	工作電壓 Input power (V±10%)		3Φ 380 V AC	
		頻率 Currency		50-60 Hz	
		控制電壓 Controlled voltage		24 V DC	
油壓單元	Hydraulic Unit	馬達 Motor power		1.5 KW	
		油箱 Oil tank		80 Liter	
控制器	Controller	伺服控制軸 NC axis	SIEMENS / FANUC		SIEMENS
			B、C、X、Z、A、V 伺服軸 Servo motor		B、C 直驅馬達 Direct drive motor X、Z、A、V 伺服軸 Servo motor
操作介面	Interface	型式/語言 Type/Language	對話式 / 中文或英文 Dialog function / Mandarin or English		
		加工方式 Cutting method	標準6種加工模式 Standard : 6 methods / 鼓型齒 Crowning / 蝸輪 Worm		
切削模式	Cutting mode	切削方式 Cutting mode	乾式 / 溼式 Dry cut / Wet cut		
機台尺寸	Dimension	寬 x 深 x 高 W x L x H	2888 x 2630 x 2830 mm		
機台重量	Weight	--	9000 KG		

INTERFACE

HARTECH滾齒機的操作介面採用對話式程式，結合圖形說明，一目了然的操作環境可以很容易讓使用者了解操作方式，縮短學習時間。

HARTECH dialog operation interface with assistant drawings is a friendly operating program. Operators can easily understand and learn it.



註：圖片僅供參考用 依實際尺寸為主
Remark: The picture above is reference only. The real object should be considered as final.